



# RK SMELTING

ENTERPRISES  
“Engineered for excellence”

## CORPORATE

### R.K. SMELTING ENTERPRISES

SHOWROOM-18, EZRA STREET,  
KOLKATA-700001

CALL US AT: 8335008746,

03371341846,9874896966

EMAIL: rk\_smelting@yahoo.in

WEBSITE: www.rksmelting.in

GST - 19AEMPJ5911K1Z4

GEM ID: H6VI220007011339

UDYAM-WB-10-0096044

## WORK & OFFICE

WORK: DURGAPUR EXPRESSWAY,  
NEAR DANKUNI TOLL PLAZA,  
DANKUNI, HOOGHLY - 712310

CALL US AT: 9062221972



LIGHTING POLE & EARTHING



# SMELTING

ENTERPRISES

“Engineered for excellence”



UDYAM REGISTRATION

**MSME**  
MICRO, SMALL & MEDIUM ENTERPRISES  
सूक्ष्म, लघु एवं मध्यम उद्यम







# WHO WE ARE

Enhancing the quality of life & bringing happiness!

Established in 1970, RK SMELTING is a technology driven company and is registered as Class I Electrical Contractor. We are primarily a Contractor and undertake all types of electrical contracts and turn-key projects in Industries, Commercial Complexes, Banks, IT Parks, Shopping Malls and Government Organizations. Besides we provide maintenance services for electrical equipments and installations. Our company has trained manpower and vast experience in the field of LT and HT electrical installations.

We can also help in setting up Data Centre Infrastructure and have sufficient expertise in the field.

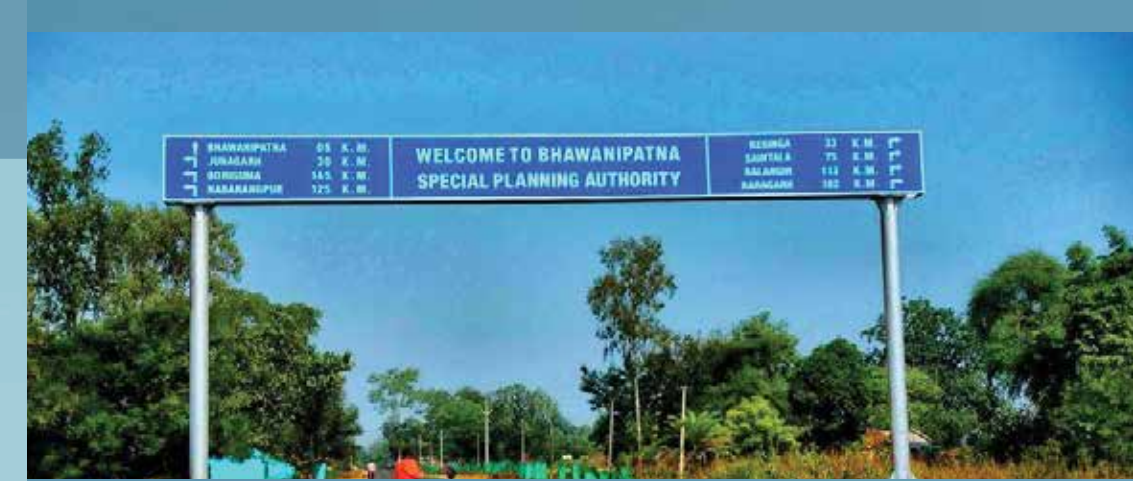
We are one of the recognized names in the industry for designing, keeping in mind the specific requirements of the clients, and providing an array of Cable Trays & Raceways, Servo Voltage Stabilizers & Isolation Transformers, LED & Solar LED Lights (including Aviation Lights) and Electrical Panels. We have immense domain experience and are engaged in providing all types of Cables, Poles, Earthing Materials, Chemical Electrodes and many more electrical items.

Our company has earned a good name in industry as a dedicated and professionally managed marketing organization. Our prices are most competitive. We specialize in providing ultimate solutions in specific and tailor-made requirements. Our commitment to quality, reliability and durability extends throughout our entire business operation. We successfully carry out all types of works to the highest possible standards within demanding time scales. All products and services offered by our company go through stringent quality tests, which give quality assurance to the clients for their satisfaction. Above all, we believe in building long term relationship with our customers and work to have their total satisfaction and their faith in us.





# G.I. POLE



HIGHWAY  
WELCOME GATE



G.I. OCTAGONAL POLES



DECORATIVE BRACKET



LUMINARIES FOR POLE



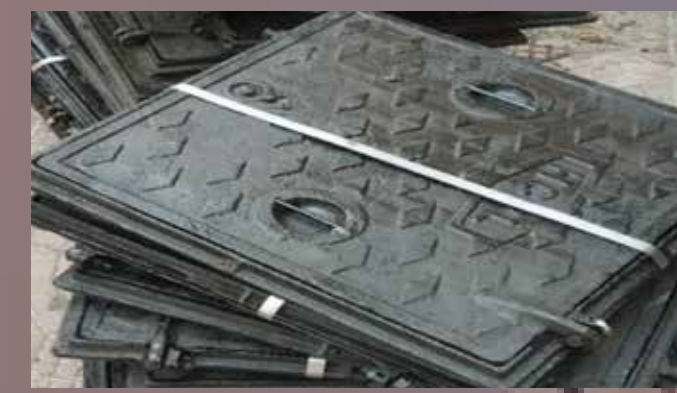
OCTAGONAL POLE  
WITH SWORD ARM



FEEDER PANEL BOX



# EARTHING MATERIAL



C.I. COVER



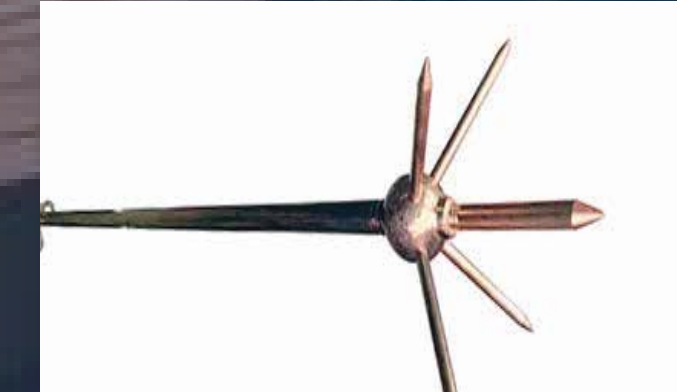
G.I. FLAT



G.I. LADDER TRAYS



G.I. CABLE PERFORATED TRAY



COPPER & LIGHTING ARRESTOR



G.I. EARTH PIPE

**Dimensions and Technical details of Steel Tubes as per is -1239(part -I )**

Nominal Bore in mm (inch)		15 (1/2")	20 (3/4")	25 (1")	32 (1.25")	40 (1.5")	50 (2")	65 (2.5")	80 (3")	100 (4")	125 (5")	150 (6")	175 (7")	200 (8")
Outer dia in mm		21.3	26.9	33.7	42.4	48.3	60.3	76.1	88.9	114.3	139.7	165.1	193.7	219.1
Light Class- A	thick (mm)	2	2.36	2.65	2.65	2.9	2.9	3.25	3.25	3.65	4.5	4.5	4.85	4.85
	kg (per mtr)	0.96	1.42	2.04	2.61	3.27	4.14	5.84	6.86	9.97	14.9	17.8	22.6	25.7
Medium Class- B	thick (mm)	2.65	2.65	3.25	3.25	3.25	3.65	3.65	4.05	4.5	4.85	4.85	5.4	5.6
	kg (per mtr)	1.22	1.58	2.46	3.15	3.61	5.1	6.53	8.48	12.1	16.2	19.2	25	29.4
Heavy Class- C	thick (mm)	3.25	3.25	4.05	4.05	4.05	4.5	4.5	4.85	5.4	5.4	5.4	5.9	5.9
	kg (per mtr)	1.45	1.9	2.9	3.68	4.43	6.17	7.9	10.1	14.5	17.9	21.2	27.3	31

**Dimensions and Technical details of Galvanized flat (Approx)**

Size in mm	19*3	25*3	25*6	32*6	40*6	50*6	50*8	50*10	65*6	65*8	65*10	75*6	75*8	75*10	75*12
Kg per mtr	0.45	0.6	1.2	1.5	1.9	2.4	3.15	4	3.1	4.1	5.1	3.6	4.75	5.9	7.1
kg per foot	0.14	0.185	0.365	0.46	0.58	0.73	0.96	1.22	0.945	1.25	1.555	1.1	1.45	1.8	2.165

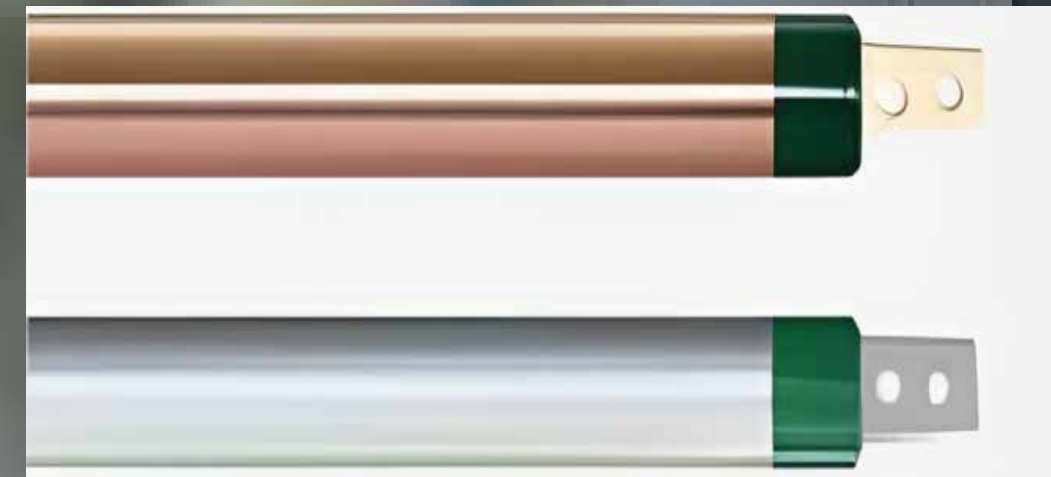


# MAINTENANCE FREE CHEMICAL ELECTRODE

# R



G.I. AND COPPER  
BONDED ROD



MAINTENANCE FREE  
CHEMICAL ELECTRODES



BFC COMPOUND



PVC COVER

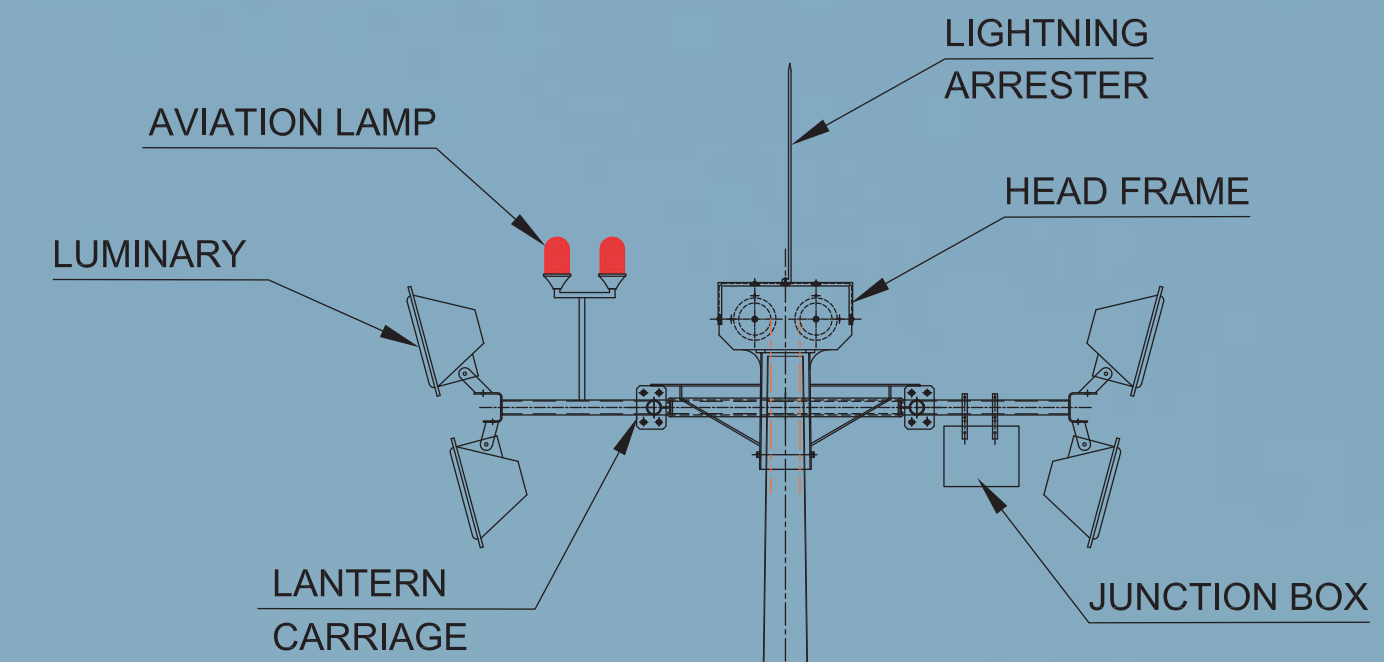


# TECHNICAL SPECIFICATION (OCTAGONAL POLE)

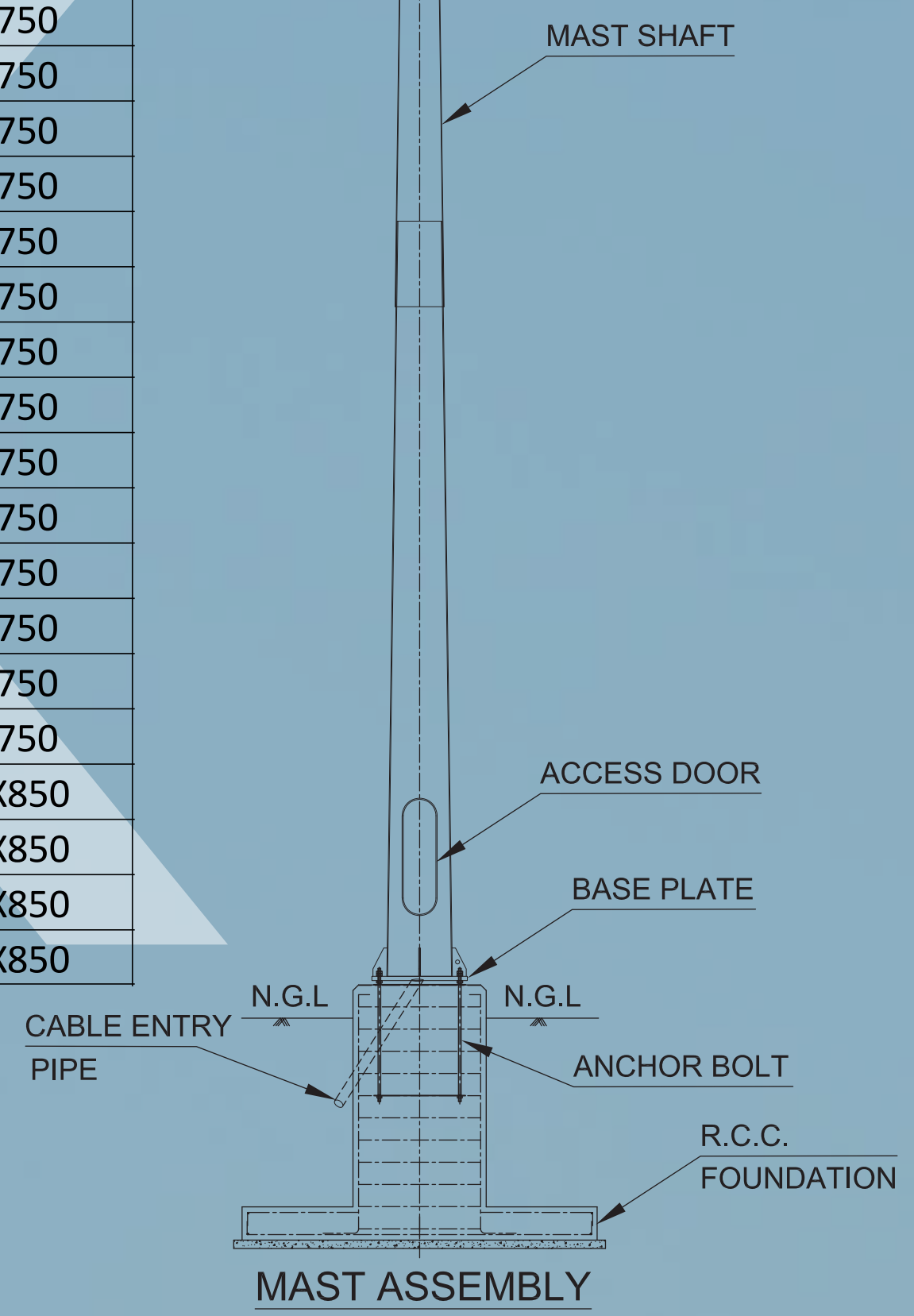
TECHNICAL SPECIFICATION (OCTAGONAL POLE)								
OCTAGONAL	HEIGHT (m)	TOP (mm)	BOTTOM (mm)	THICK (mm)	SIDES	BASE PLATE	PCD	FOUNDATION
RKOP 3030	3	70	130	3	8	220X220X12	220	4X M16X600
RKOPP 4030	4	70	130	3	8	200X200X12	200	4X M16X600
RKOP 5030	5	70	130	3	8	200X200X12	200	4X M16X600
RKOP 6030	6	70	130	3	8	200X200X12	200	4X M20X600
RKOP 7030	7	70	130	3	8	200X200X12	200	4X M20X600
RKOP 8030	8	70	130	3	8	220X220X16	220	4X M20X700
RKOP 9030	9	70	155	3	8	250X250X16	250	4X M24X750
RKOP 9031	9	70	130	3	8	220X220X16	220	4X M24X750
RKOP 9032	9	70	140	3	8	230X230X16	230	4X M24X750
RKOP 9033	9	70	150	3	8	240X240X16	240	4X M24X750
RKOP 1030	10	70	175	3	8	275X275X16	275	4X M24X750
RKOP 1031	10	70	155	3	8	250X250X16	250	4X M24X750
RKOP 1130	11	90	210	3	8	300X300X16	300	4X M24X750
RKOP 1230	12	90	240	3	8	320X320X16	320	4X M24X750
RKOP 1231	12	90	210	3	8	300X300X16	300	4X M24X750



# TECHNICAL SPECIFICATION (HIGH MAST POLE)



TECHNICAL SPECIFICATION (HIGH MAST POLE)									
HIGH MAST	HEIGHT (m)	TOP (mm)	BOTTOM (mm)	THICK (mm)	SIDES	SECTION LENGTH (mm)	RING BASE PLATE (mm)	PCD (mm)	FOUNDATION BOLT
RKHM10	10	100	310	3	8	5250	OD 510X16	385	4X M24X750
RKHM12	12	100	310	3	12	6250	OD 510X16	385	4X M24X750
RKHM 12.5L	12.5	110	330	3,3	12	6500	OD 520X16	440	6X M24X750
RKHM 12.5 M	12.5	110	330	3,3	12	6500	OD 520X20	440	6X M24X750
RKHM 12.5 H	12.5	130	340	3,3	12	6500	OD 520X20	440	6X M24X750
RKHM 12.5 SH	12.5	150	360	3,3	12	6500	OD 560X20	445	6X M24X750
RKHM 16 L	16	150	360	3,3	20	8250	OD 560X16	460	8X M24X750
RKHM 16 M	16	150	360	4,3	20	8250	OD 560X20	460	8X M24X750
RKHM 16 H	16	150	410	4,3	20	8250	OD 610X20	490	8X M24X750
RKHM 16 SH	16	150	460	4,3	20	8250	OD 660X25	490	8X M28X750
RKHM 20 L	20	150	360	3,3	20	10300	OD 560X20	445	8X M24X750
RKHM 20 M	20	200	420	4,3	20	10300	OD 620X20	520	8X M28X750
RKHM 20 H	20	200	420	4,4	20	10300	OD 620X25	520	8X M28X750
RKHM 20 SH	20	150	460	4,4	20	10300	OD 660X25	590	8X M28X750
RKHM 25 M	25	150	460	5,4,3	20	8750	OD 660X25	590	12X M28X850
RKHM 25 H	25	150	540	5,4,3	20	8750	OD 740X30	650	12X M30X850
RKHM 30 M	30	150	540	5,4,3	20	10300	OD 740X30	650	12X M30X850
RKHM 30 H	30	150	610	5,4,3	20	10300	OD 810X30	740	12X M30X850





# KK SMELTING

ENTERPRISES

“Engineered for excellence”

## CORPORATE

### **R.K. SMELTING ENTERPRISES**

SHOWROOM-18, EZRA STREET,  
KOLKATA-700001

CALL US AT: 8335008746,  
03371341846,9874896966

EMAIL: rk\_smelting@yahoo.in

WEBSITE: [www.rksmelting.in](http://www.rksmelting.in)

GST - 19AEMPJ5911K1Z4

GEM ID: H6VI220007011339

UDYAM-WB-10-0096044

## WORK & OFFICE

WORK: DURGAPUR EXPRESSWAY,  
NEAR DANKUNI TOLL PLAZA,  
DANKUNI, HOOGHLY - 712310

CALL US AT: 9062221972